

# MODEL 115B FOR FEEDING UP TO 850 TONS (765 MT) PER HOUR

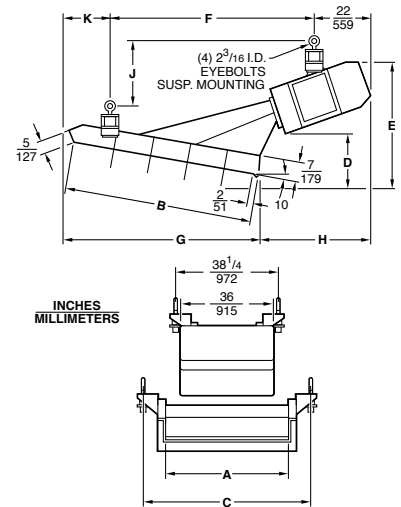
The 115B facilitates the smooth and dependable transfer of abrasives, slag, coal, ores and grain at up to 850 tons (765 mt) per hour. The unit represents an excellent choice whenever controlled feeding must be accomplished in a cost-effective manner. Specially designed to withstand many years of hard work, the unit's rugged construction includes a 48 x 72 inch (1215 x 1828 mm) tray and below-deck or overhead-drive (please specify).

Power Supply	230V, 460V, or 575V 50–60 Cycles, Single Phase
Full Load Power Input	44.8 Amp at 460V
Shipping Weight	5075 lb. (2302 kg)

## SPECIFICATIONS

### 115B OVERHEAD-DRIVE STANDARD TRAYS

SIZE		A	B	C	D	E	F	G	H	J	K
30 x 108	in	30	108	45-1/2	22-7/8	47-1/4	114-5/8	110	44-3/4	24	19
	mm	762	2741	1156	582	1200	2912	2793	1137	610	483
36 x 96	in	36	96	51-1/4	22-1/2	46-1/2	110-3/8	98-3/8	51-3/4	23-5/8	18-5/8
	mm	914	2439	1302	573	1181	2804	2499	1314	599	473
42 x 84	in	42	84	57-1/4	20-3/8	44-1/4	101	85-1/8	52-5/8	24-5/8	15-5/8
	mm	1067	2134	1454	517	1124	2567	2163	1336	626	397
48 x 72	in	48	72	63-1/4	20-1/4	43-1/2	87-1/2	74-1/2	53-1/2	26-5/8	19-1/2
	mm	1219	1829	1607	515	1105	2223	1893	1360	678	494
54 x 60	in	54	60	69-1/4	12-1/8	37	72-7/8	62-5/8	44-5/8	22	13-1/8
	mm	1372	1524	1757	307	940	1850	1590	1134	559	335



### 115B UNDER-DRIVE STANDARD TRAYS

SIZE		A	B	C	D	E	F	G	H	J
30 x 108	in	30	108	45-1/4	12-5/8	37-3/4	24-7/8	74-3/8	14-3/4	113-1/4
	mm	762	2743	1149	320	960	632	1889	375	2877
36 x 96	in	36	96	51-1/4	14	37-1/8	31-3/8	81-1/2	12	108
	mm	914	2438	1302	356	944	798	2070	304	2743
42 x 84	in	42	84	57-1/4	14-3/8	35-1/4	32-1/8	54-1/8	14-1/8	96-7/8
	mm	1067	2134	1454	367	897	817	1375	358	2462
48 x 72	in	48	72	63-3/8	18-1/2	33-1/4	35-1/2	43-3/8	14-3/8	88-3/8
	mm	1219	1829	1609	471	846	902	1101	365	2245
54 x 60	in	54	60	69-1/4	11-3/8	28-1/8	37-1/4	47-1/2	8	78-1/4
	mm	1372	1524	1759	288	713	945	1206	203	1989

