

MODEL 75B FOR FEEDING UP TO 350 TONS (315 MT) PER HOUR

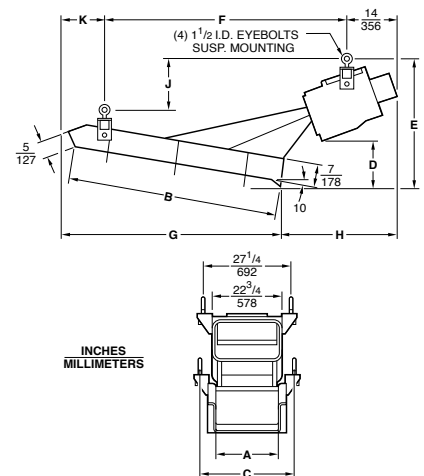
The popular 75B has a feeding capacity of 350 tons (315 mt) per hour. With its precise control of this feed rate it is ideal for use in proportioning aggregates and other materials. Fine or coarse, large or small bulk materials are fed equally well. Capacity is based on 30 x 48 inch (762 x 1219 mm) tray properly installed with skirtboards.

Power Supply	115V, 230V, 460V, or 575V 50–60 Cycles, Single Phase
Full Load Power Input	15 Amp at 230V
Shipping Weight	1575 lb. (714 kg)

SPECIFICATIONS

75B OVERHEAD-DRIVE STANDARD TRAYS

SIZE		A	B	C	D	E	F	G	H	J	K
14 x 78	in	14	78	22-1/2	20-1/8	37-3/4	85-3/8	80-1/4	39	16-1/4	19-7/8
	mm	355	1981	570	512	959	2169	2038	990	412	506
18 x 72	in	18	72	27	15-3/8	34	73-7/8	74-1/4	30-1/2	12-7/8	15-5/8
	mm	457	1829	636	391	864	1877	1887	776	327	396
24 x 60	in	24	60	31-3/4	14-1/8	32-3/8	66	62-3/8	35-1/2	14	17-7/8
	mm	610	1524	806	357	822	1678	1584	901	355	455
30 x 48	in	30	48	39	10	30	57-7/8	50-7/8	36-3/8	13-1/8	15-3/8
	mm	762	1219	991	254	762	1470	1292	924	334	391
36 x 42	in	36	42	45	10	30	57-1/8	45	36-3/8	13-1/8	9-1/2
	mm	914	1067	1143	254	762	1470	1143	924	334	241



75B UNDER-DRIVE STANDARD TRAYS

SIZE		A	B	C	D	E	F	G	H	J	
14 x 78	in	14	78	22-1/2	12-3/4	32-3/4	9-5/8	54-1/4	11-3/8	55-5/8	
	mm	356	1981	572	323	833	245	1377	288	1414	
18 x 72	in	18	72	27	8-15/16	27-23/32	12-15/32	55-1/4	6-9/16	57-13/32	
	mm	457	1829	686	227	704	317	1403	167	1458	
24 x 60	in	24	60	33	10-3/8	27-1/4	18-1/2	41-1/4	8-1/8	43-1/8	
	mm	610	1524	838	265	693	471	1049	206	1094	
30 x 48	in	30	48	38-1/2	13	27-3/4	24	39-1/2	9-7/8	41-1/4	
	mm	762	1219	978	329	705	611	1005	250	1049	
36 x 42	in	36	42	44-1/2	6-3/4	20-5/8	26-1/8	37-5/8	9	39-7/8	
	mm	914	1067	1130	173	525	663	957	229	1012	
100 x 96 120 x 84 140 x 72 160 x 60		CONSULT HOME OFFICE									

