

MODEL 65B FOR FEEDING UP TO 180 TONS (162 MT) PER HOUR

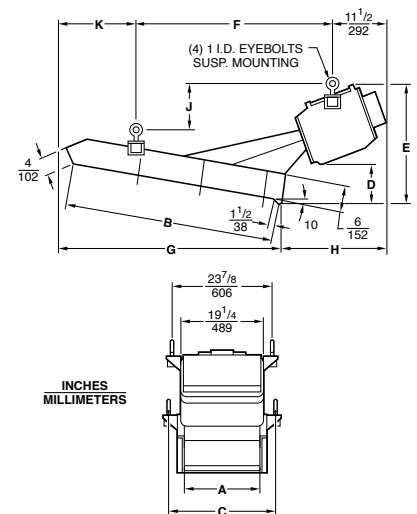
The 65B provides a wide capacity range to feed controlled amounts from a few pounds to 180 tons (162 mt) per hour, for materials weighing 100 lb/ft³ (1.6 g/cu cm), and even more if operated with more downslope and skirtboards. All units are available with either under-drive or overhead-drives (please specify). Capacity is based on 24 x 30 inch (610 x 762 mm) tray properly installed with skirtboards.

Power Supply	115V, 230V, 460V, or 575V 50–60 Cycles, Single Phase
Full Load Power Input	8 Amp at 230V
Shipping Weight	750 lb. (340 kg)

SPECIFICATIONS

65B OVERHEAD-DRIVE STANDARD TRAYS

SIZE		A	B	C	D	E	F	G	H	J	K
10 x 60	in	10	60	17-1/4	15-1/2	32-3/8	65-1/4	62-1/2	34-5/8	15-1/2	20-5/8
	mm	254	1524	438	393	822	1656	1587	879	394	525
12 x 54	in	12	54	19-1/4	12-3/4	29-5/8	60-1/8	56-1/4	29-1/2	13	14-3/8
	mm	305	1372	489	325	752	1527	1429	749	330	365
16 x 48	in	16	48	23-1/4	10-3/8	27-1/4	52-3/8	50-3/8	25-3/8	11	12
	mm	406	1219	591	264	692	1332	1279	644	279	305
18 x 42	in	18	42	25-1/4	10-5/8	25-1/2	51-1/4	43-1/2	31-1/8	11	12-3/8
	mm	457	1067	641	270	648	1300	1105	791	278	314
24 x 30	in	24	30	31-1/4	9-3/4	25-7/8	32-1/2	31-7/8	22-7/8	11-7/8	10-7/8
	mm	610	762	794	247	657	827	810	580	302	276



65B UNDER-DRIVE STANDARD TRAYS

SIZE		A	B	C	D	E	F	G	H	J	
10 x 60	in	10	60	23-3/4	6-3/4	22-7/8	9-1/2	41-7/8	4-1/8	43-5/8	
	mm	254	1524	603	171	581	242	1065	104	1107	
12 x 54	in	12	54	23-7/8	7-1/2	22-1/4	13-5/8	41-7/8	4-1/2	43-1/4	
	mm	305	1372	606	189	564	346	1064	115	1097	
16 x 48	in	16	48	23-1/4	7-7/8	21-1/2	13-1/2	35-3/8	4-5/8	36-1/2	
	mm	406	1219	591	199	547	344	898	118	927	
18 x 42	in	18	42	25-1/4	8-7/8	21-1/2	15-3/4	32-3/8	6-3/8	33-5/8	
	mm	457	1067	641	226	546	400	823	162	853	
24 x 30	in	24	30	31-1/4	9-3/8	19-7/8	19-3/16	28-5/8	6	29	
	mm	610	762	794	237	505	487	728	152	737	
100 x 60 120 x 48 140 x 36		CONSULT HOME OFFICE									

